

DJM-2000 Update Manual for WINDOWS® 7

1. Check the unzipped file.

1. Unzip the downloaded file.

Right click on downloaded file and unzip it by "Extract All" on menu.

2. Check the unzipped file.

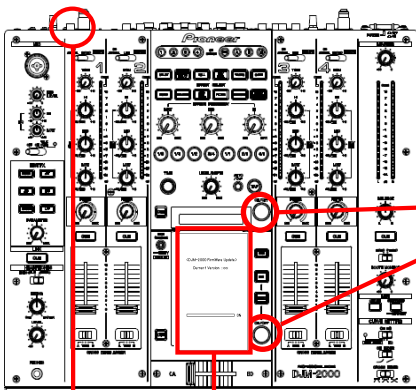
"DJM-2000_vxxx" folder is generated by unzipping the ZIP file.

Confirm the following files are contained in the folder.

1. DJM2000_vxxx.exe
2. DJM2000_vxxx.upd
3. Update manual.pdf

* xxx is version of new firmware.

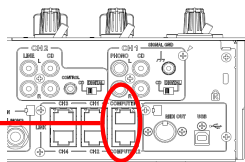
2. Set up DJM-2000 to update



<STEP1> Press [ON/ OFF (BEAT EFFECT)] and [ON/ OFF (TOUCH PANEL EFFECT)] with power button. Move to update mode.

<STEP2> Check the current version of your firmware by "Current version" on touch panel (No need to update it if current version shows as x.xx. It is the latest firmware)

<STEP3> Connect your computer with DJM-2000 by LAN cable.

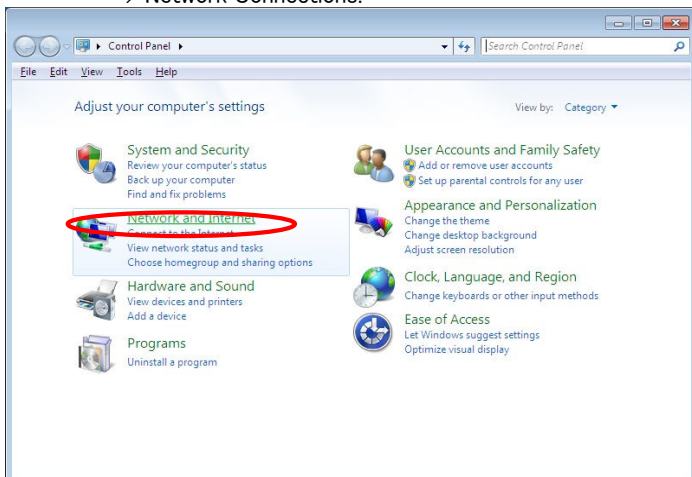


Connect LAN cable to the port of COMPUTER 1 or 2 on rear on the DJM-2000.

3. Update the firmware by computer operation

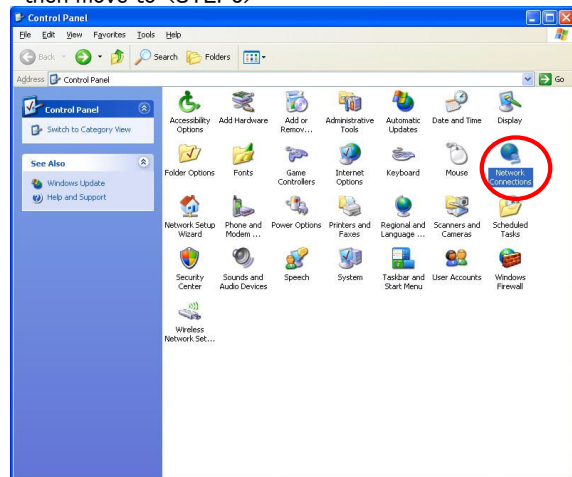
1. Adjust network setting

<STEP1> Open "Control Panel" -> "Network and Internet" -> Network Connections.

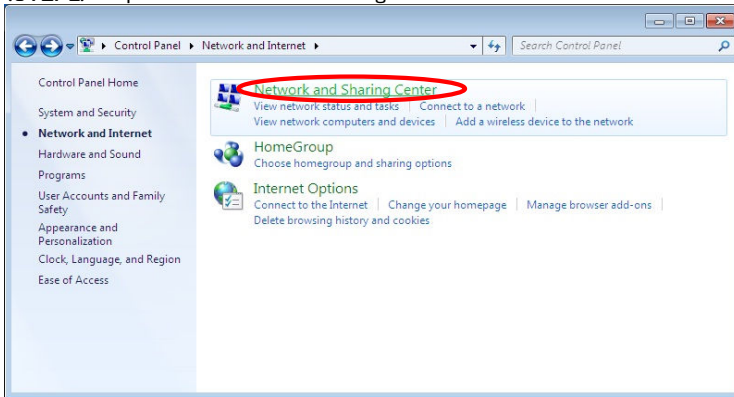


*If your control panel is classic

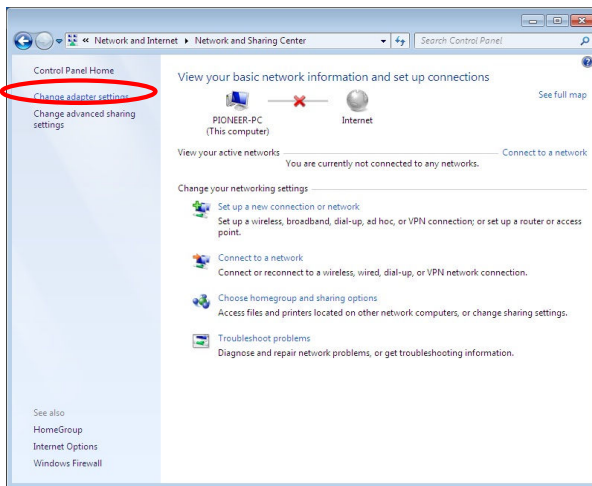
"Start" -> "Control Panel" -> "Network Connections", then move to <STEP3>



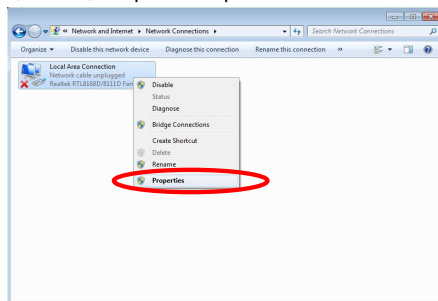
<STEP2> Open "Network and Sharing Center"



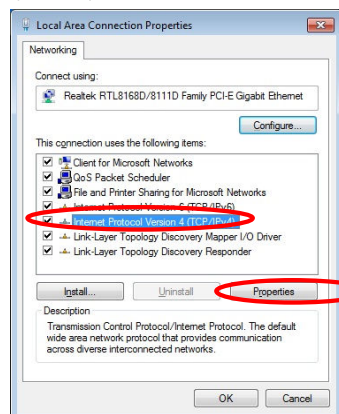
<STEP3> Open "Change adapter setting"



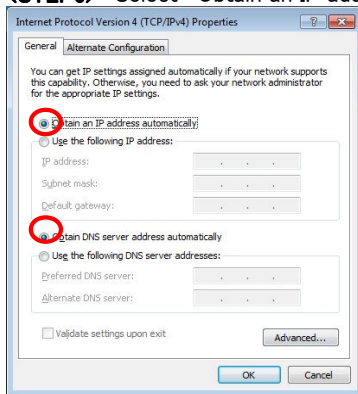
<STEP4> Open "Properties" of network device DJM-2000 connected. (Right click on icon -> Property)



<STEP5> Select "Internet Protocol (TCP/IP) and click "Properties"

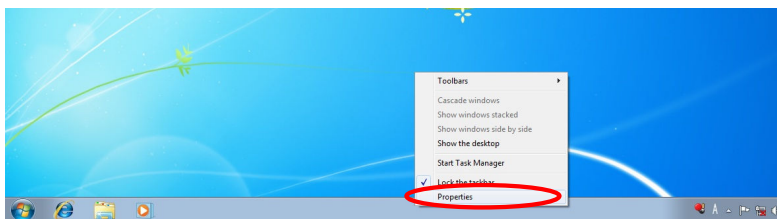


<STEP6> Select "Obtain an IP address automatically", "Obtain DNS server address automatically".

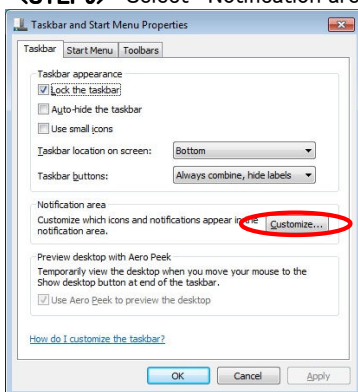


<STEP7> Close network Connections by "OK"

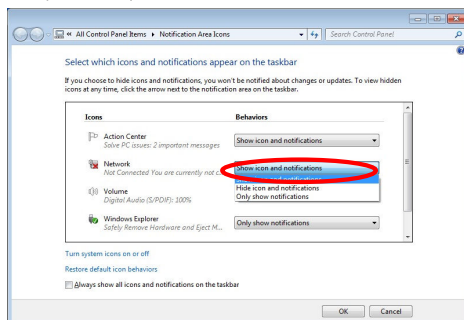
<STEP8> Right click on task bar -> Select "Properties"



<STEP9> Select "Notification area" -> "Customize"






<STEP10> Select "Show icon and notifications" on network.



<STEP11> Close "Properties" by "OK"

2. Confirm DJM-2000 and the computer are connected.

*You might check the status of connection by the icon on task bar (right bottom of picture).

| Icon | Status of connection |
|---|--|
|  | LAN cable is unconnected. Check the cable is connected. |
|  | Checking the status of connection. Wait a minute. |
|  | DJM-2000 is connected. Start update tool. |

3. Start updating.

*Close all of applications before updating.

<STEP1> Double click "DJM2000_vxxx.exe"
Start update tool.

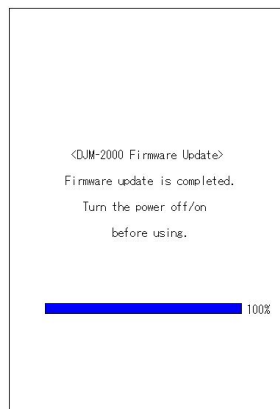
<STEP2> Select language.



<STEP3> Start updating by pressing "Start"
*NEVER remove power/LAN cable on updating.
*If the waiting picture remains more than 30seconds, the network connection might not work.
Press Cannel button and update again after connecting it.

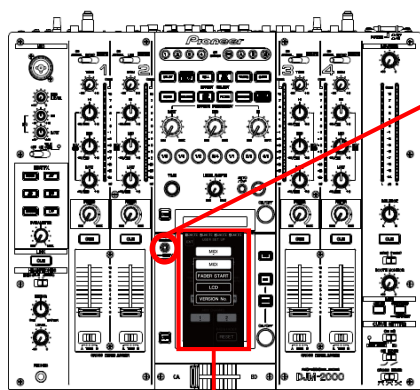


<STEP4> Confirm the updating completed.
Updating completed when "update completed" message shows after meter touch panel reached 100%.



<STEP5> Restart DJM-2000
*Please adjust network setting as original if you adjusted it in 3-1.

4. Check the current version of DJM-2000 to check the update was completed.



<STEP1> Enter to "USER SET UP" mode.
Press [LIVE SAMPLER (UTILITY, WAKE UP)] one more second.

<STEP2> Select VERSION No.
Check it is the latest version.
* Update was completed if it shows "xxx"



<STEP3> Close "USER SET UP" mode.
Press [EXIT] on top of left.

• Microsoft®, Windows Vista®, and Windows® are either registered trademarks or trademarks of Microsoft Corporation in the United States and/ or other countries.

DJM-2000 Update Manual for WINDOWS VISTA®

1. Check the decompression file.

1. Unzip the downloaded file.

Right click on downloaded file and unzip it by "Extract All" on menu.

2. Check the unzipped file.

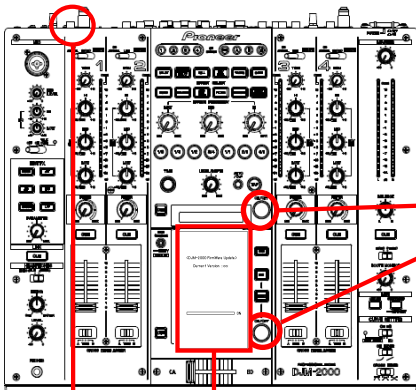
"DJM-2000_vxxx" folder is generated by unzipping the ZIP file.

Confirm the following files are contained in the folder.

1. DJM2000_vxxx.exe
2. DJM2000_vxxx.upd
3. Update manual.pdf

* xxx is version of new firmware.

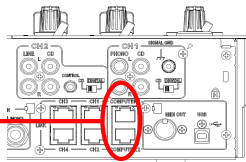
2. Setup DJM-2000 to update



<STEP1> Press [ON/ OFF (BEAT EFFECT)] and [ON/ OFF (TOUCH PANEL EFFECT)] with power button. Move to update mode.

<STEP2> Check the current version of your firmware by "Current version" on touch panel (No need to update it if current version shows as x.xx. It is the latest firmware)

<STEP3> Connect your computer with DJM-2000 by LAN cable.



Connect LAN cable to the port of COMPUTER 1 or 2 on rear on the DJM-2000.

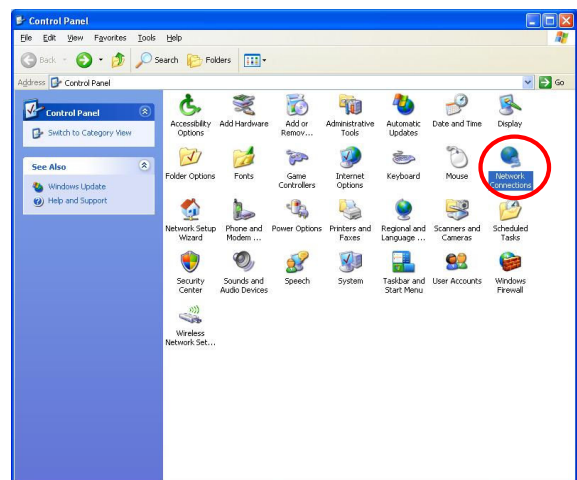
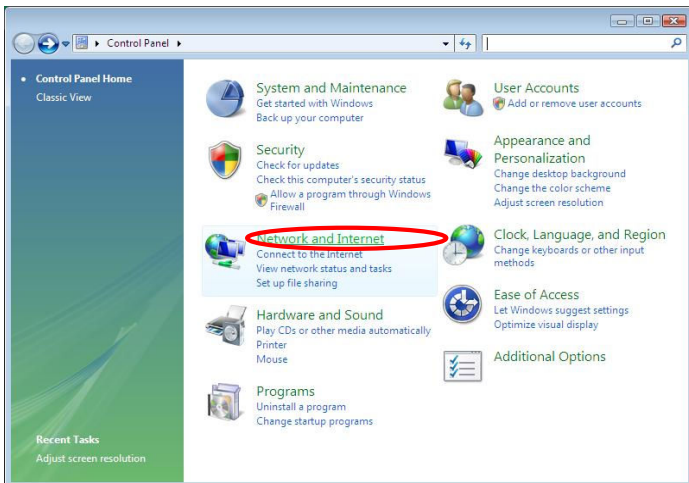
3. Update the firmware by computer operation

1. Adjust network setting

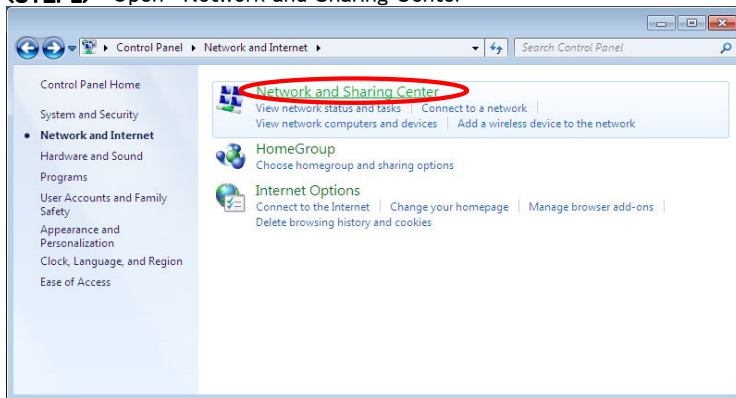
<STEP1> Open "Control Panel" -> "Network and Internet" -> Network Connections.

*If your control panel is classic

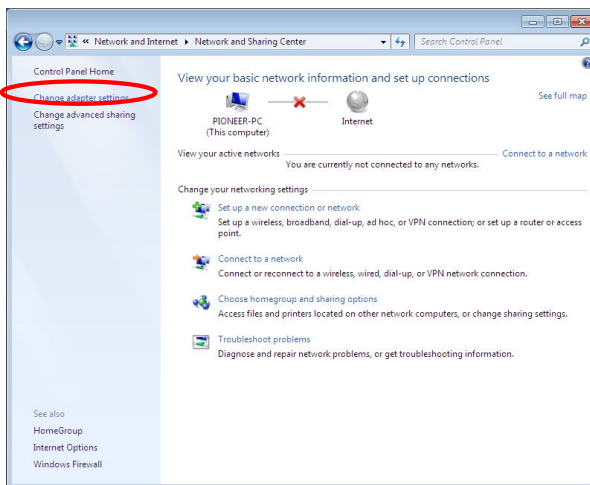
"Start" -> "Control Panel" -> "Network Connections", then move to <STEP3>



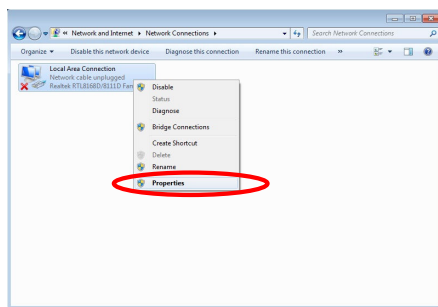
<STEP2> Open "Network and Sharing Center"



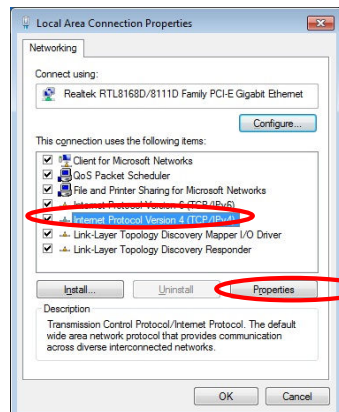
<STEP3> Open "Change adapter setting"



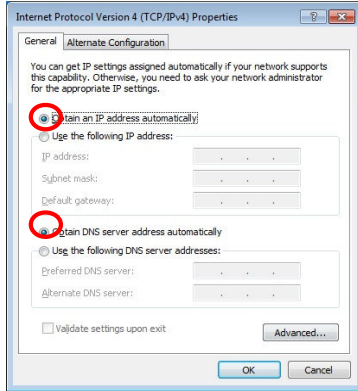
<STEP4> Open "Properties" of network device DJM-2000 connected. (Right click on icon -> Property)



<STEP5> Select "Internet Protocol (TCP/IP) and click "Properties"

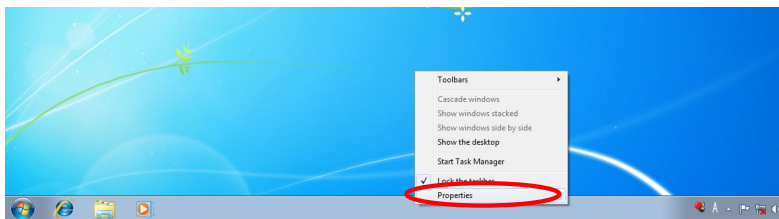


<STEP6> Select "Obtain an IP address automatically", "Obtain DNS server address automatically".

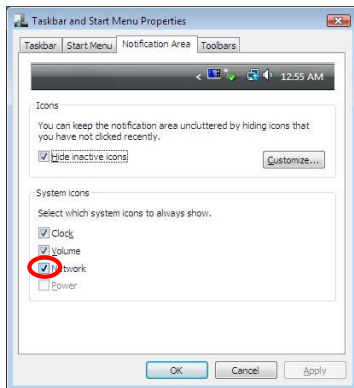


<STEP7> Close network Connections by "OK"

<STEP8> Right click on task bar -> Select "Properties"



<STEP9> Select "Notification area" and check "Network"



<STEP10> Close "Properties" by "OK"

2. Confirm DJM-2000 and the computer are connected.

*You might check the status of connection by the icon on task bar (right bottom of picture).

| | | | |
|----------------------|--|---|---|
| Message & Icon | <p>Not Connected</p> <p>You are currently not connected to any networks.</p> | <p>Currently connected to:</p> <p>Identifying... Access: Limited Connectivity</p> | <p>Currently connected to:</p> <p>Unidentified network Access: Limited Connectivity</p> |
| Status of Connection | LAN cable is unconnected. Check the cable is connected. | Checking the status of connection. Wait a minute. | DJM-2000 is connected. Start update tool. |

3.Start updating.

*Close all of applications before updating.

*If you are setting firewall by security software, it would not be able to transfer the data to mixer.
Please read the operation manual of the security software or cancellt the firewall.

<STEP1> Double click "DJM2000_vxxx.exe"
Start update tool.

<STEP2> Select language.



<STEP3> Start updating by pressing "Start"

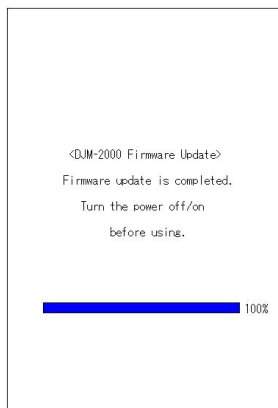
*NEVER remove power/LAN cable on updating.

*If the waiting picture remains more than 30seconds, the network connection might not work.
Press Cannel button and update again after connecting it.



<STEP4> Confirm the updating completed.

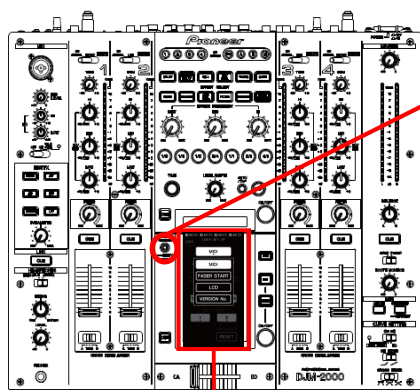
Updating completed when "update completed" message shows after meter touch panel reached 100%.



<STEP5> Restart DJM-2000

*Please adjust network setting as original if you adjusted it in 3-1.

4. Check the current version of DJM-2000 to check the update was completed.



<STEP1> Enter to "USER SET UP" mode.
Press [LIVE SAMPLER (UTILITY, WAKE UP)] one more second.

<STEP2> Select VERSION No.
Check it is the latest version.
* Update was completed if it shows "xxx"



<STEP3> Close "USER SET UP" mode.
Press [EXIT] on top of left.

• Microsoft®, Windows Vista®, and Windows® are either registered trademarks or trademarks of Microsoft Corporation in the United States and/ or other countries.

DJM-2000 Update Manual for WINDOWS® XP

1. Check the decompression file.

1. Unzip the downloaded file.

Right click on downloaded file and unzip it by "Extract All" on menu.

2. Check the unzipped file.

"DJM-2000_vxxx" folder is generated by unzipping the ZIP file.

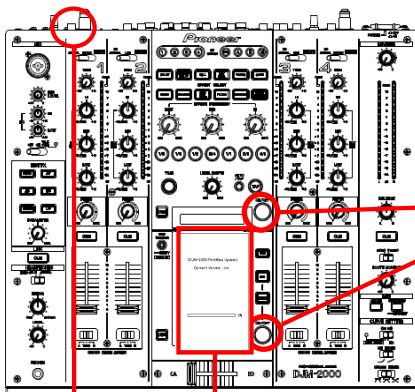
Confirm the following files are contained in the folder.

1. DJM2000_vxxx.exe
2. DJM2000_vxxx.upd
3. Update manual.pdf

* xxx is version of new firmware.

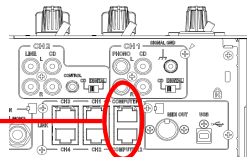
* Extension (.exe or .upd) might not show on by the setting of the computer.

2. Setup DJM-2000 to update



<STEP1> Press [ON/ OFF (BEAT EFFECT)] and [ON/ OFF (TOUCH PANEL EFFECT)] with power button. Move to update mode.

<STEP2> Check the current version of your firmware by "Current version" on touch panel (No need to update it if current version shows as x.xx. It is the latest firmware)



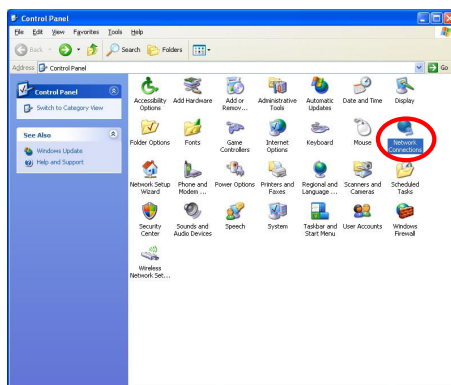
<STEP3> Connect your computer with DJM-2000 by LAN cable.

Connect LAN cable to the port of COMPUTER 1 or 2 on rear on the DJM-2000.

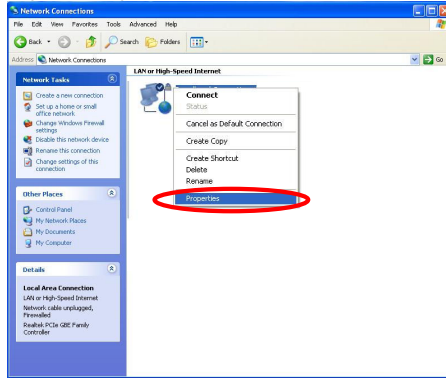
3. Update the firmware by computer operation

1. Adjust network setting

<STEP1> "Start" -> "Setting" -> "Control Panel" -> Network Connections"

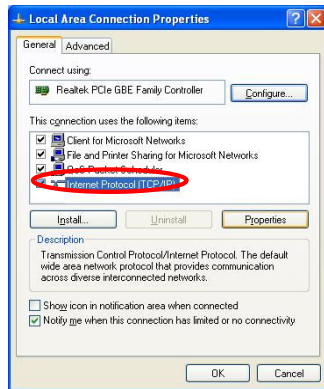


<STEP2> Open "Properties" of network device DJM-2000 connected. (Right click on icon -> Properties)

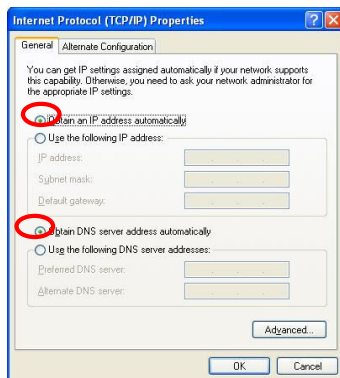


<STEP3> Check the box of "Notify me when this connection has limited or no connectivity"

<STEP4> Select "Internet Protocol (TCP/IP)" and click "Properties".



<STEP5> Select "Obtain an IP address automatically", "Obtain DNS server address automatically".



<STEP6> Close network Connections by "OK"

2. Confirm DJM-2000 and the computer are connected.

*You might check the status of connection by the icon on task bar (right bottom of picture).

| Icon | Status of connection |
|------|--|
| | LAN cable is unconnected. Check the cable is connected. |
| | Checking the status of connection. Wait a minute. |
| | DJM-2000 is connected. Start update tool. |

3.Start updating.

*Close all of applications before updating.

*If you are setting firewall by security software, it would not be able to transfer the data to mixer.
Please read the operation manual of the security software or cancellt the firewall.

<STEP1> Double click "DJM2000_vxxx.exe"
Start update tool.

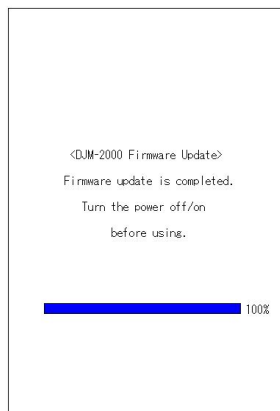
<STEP2> Select language.



<STEP3> Start updating by pressing "Start"
*NEVER remove power/LAN cable on updating.
*If the waiting picture remains more than 30seconds, the network connection might not work.
Press Cannel button and update again after connecting it.

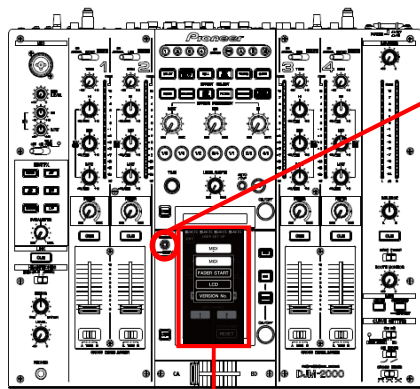


<STEP4> Confirm the updating completed.
Updating completed when "update completed" message shows after meter touch panel reached 100%.



<STEP5> Restart DJM-2000
*Please adjust network setting as original if you adjusted it in 3-1.

4. Check the current version of DJM-2000 to check the update was completed.



<STEP1> Enter to "USER SET UP" mode.
Press [LIVE SAMPLER (UTILITY, WAKE UP)] one more second.

<STEP2> Select VERSION No.
Check it is the latest version.
* Update was completed if it shows "xxx"



<STEP3> Close "USER SETUP" mode.
Press [EXIT] on top of left.

• Microsoft®, Windows Vista®, and Windows® are either registered trademarks or trademarks of Microsoft Corporation in the United States and/ or other countries.

DJM-2000 Update Manual for MAC OS

1. Check the decompression file.

1. Unzip the downloaded file.

Double click on downloaded file and unzip it by "Extract All" on menu.

2. Check the unzipped file.

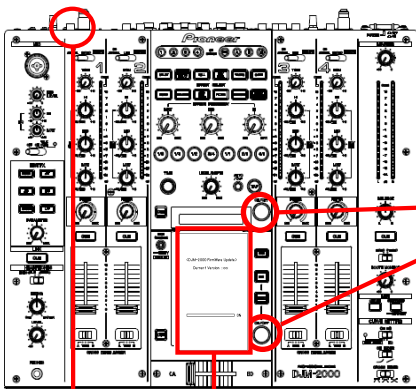
"DJM2000_vxxx" folder is generated by unzipping the ZIP file.

Confirm the following files are contained in the folder.

1. DJM2000_vxxx
2. Update manual.pdf

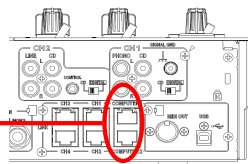
* xxx is version of new firmware.

2. Setup DJM-2000 to update



<STEP1> Press [ON/ OFF (BEAT EFFECT)] and [ON/ OFF (TOUCH PANEL EFFECT)] with power button. Move to update mode.

<STEP2> Check the current version of your firmware by "Current version" on touch panel (No need to update it if current version shows as x.xx. It is the latest firmware)



<STEP3> Connect your computer with DJM-2000 by LAN cable.

Connect LAN cable to the port of COMPUTER 1 or 2 on rear on the DJM-2000.

3. Update the firmware by computer operation

1. Adjust network setting

"System Performance" -> "Network" -> "Ethernet" -> "Using DHCP"

2. Confirm DJM-2000 and the computer are connected.

You can check the status of connection on "System Performance" -> "Network" -> "Ethernet"

| | | |
|--|--|--|
| | | |
| <p>LAN cable is unconnected. Check the cable is connected.</p> | <p>Checking the status of connection. Wait a minute.</p> | <p>DJM-2000 is connected. Start update tool.</p> |

3.Start updating.

*Close all of applications before updating.

*If you are setting firewall by security software, it would not be able to transfer the data to mixer.
Please read the operation manual of the security software or cancellt the firewall.

<STEP1> Double click "DJM2000_vxxx"
Start update tool.

<STEP2> Select language.



<STEP3> Start updating by pressing "Start"

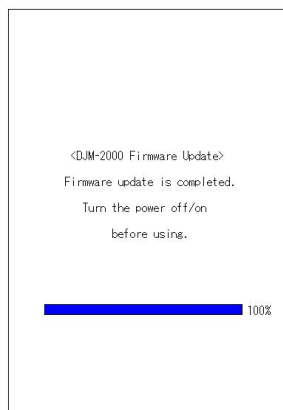
*NEVER remove power/LAN cable on updating.

*If the waiting picture remains more than 30seconds, the network connection might not work.
Press Cannel button and update again after connecting it.



<STEP4> Confirm the updating completed.

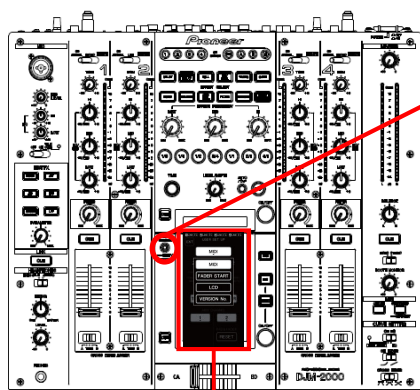
Updating completed when "update completed" message shows after meter touch panel reached 100%.



<STEP5> Restart DJM-2000

*Please adjust network setting as original if you adjusted it in 3-1.

4. Check the current version of DJM-2000 to check the update was completed.



<STEP1> Enter to "USER SET UP" mode.
Press [LIVE SAMPLER (UTILITY, WAKE UP)]
one more second.

<STEP2> Select VERSION No.
Check it is the latest version.
* Update was completed if it shows "xxx"



<STEP3> Close "USER SET UP" mode.
Press [EXIT] on top of left.

• Apple, Macintosh and Mac OS are trademarks of Apple Inc., registered in the U.S. and other countries.

Error Message and Details(for Windows)

| Title | Message | Detail |
|---------------------|----------------------------------|--|
| Formatting Error | Cannot find the EXE file_I1 | Cannot find the EXE file. Restart the application. |
| | Cannot find Update File_I4 | Cannot find the update file or update file is not correct. Download the file and update again. |
| | Cannot connect to the MIXER_I5 | Failed connection with mixer. Check the status of network and restart the application. |
| | Cannot find Network Interface_I6 | Cannot find the network setting to connect with mixer. Check the status of network and restart the application. |
| | Cannot find network Interface_I9 | Cannot find network interface to connect with mixer. Check the status of network and restart the application. |
| Connection Error | Cannot connect the MIXER_C1 | Could not connect with mixer. Check the status of network and restart the application. |
| | Cannot connect the MIXER_C2 | Could not connect with mixer. Check the status of network and restart the application. |
| | Cannot send the update data_C4 | Failed data transfer to mixer. Stand up Mixer again by update mode and restart the application. |
| Data Transfer Error | Cannot find the Update File_S1 | Cannot find the update file. Download the file and update again. |
| | Cannot find the Update File_S2 | Failed data transfer to mixer. The file might have a problem. Stand up Mixer again by update mode and restart the application. |
| | Cannot find the Update File_S3 | Failed data transfer to mixer. Stand up Mixer again by update mode and restart the application. |

Error Message and Details(for MAC)

| Title | Message | Detail |
|---------------------|----------------------------------|--|
| Formatting Error | Cannot find the EXE file_I2 | Cannot find the EXE file. Restart the application. |
| | Cannot find the EXE file_I3 | Cannot find the EXE file. Restart the application. |
| | Cannot find Update File_I4 | Cannot find the update file or update file is not correct. Download the file and update again. |
| | Cannot get the Host name_I7 | Cannot get the host name. Check the status of network and restart the application. |
| | Cannot get IP address_I8 | Cannot get IP address. Check the status of network and restart the application. |
| | Cannot find network Interface_I9 | Cannot find network I/F to connect with mixer. Check the status of network and restart the application. |
| Connection Error | Cannot connect the MIXER_C1 | Could not connect with mixer. Check the status of network and restart the application. |
| | Cannot connect the MIXER_C2 | Could not connect with mixer. Check the status of network and restart the application. |
| | Cannot connect the MIXER_C3 | Could not connect with mixer. Check the status of network and restart the application. |
| | Cannot send the update data_C4 | Failed data transfer to mixer. Stand up Mixer again by update mode and restart the application. |
| Data Transfer Error | Cannot find the Update File_S1 | Cannot find the update file. Download the file and update again. |
| | Cannot find the Update File_S2 | Failed data transfer to mixer. The file might have a problem. Stand up Mixer again by update mode and restart the application. |
| | Cannot find the Update File_S3 | Failed data transfer to mixer. Stand up Mixer again by update mode and restart the application. |